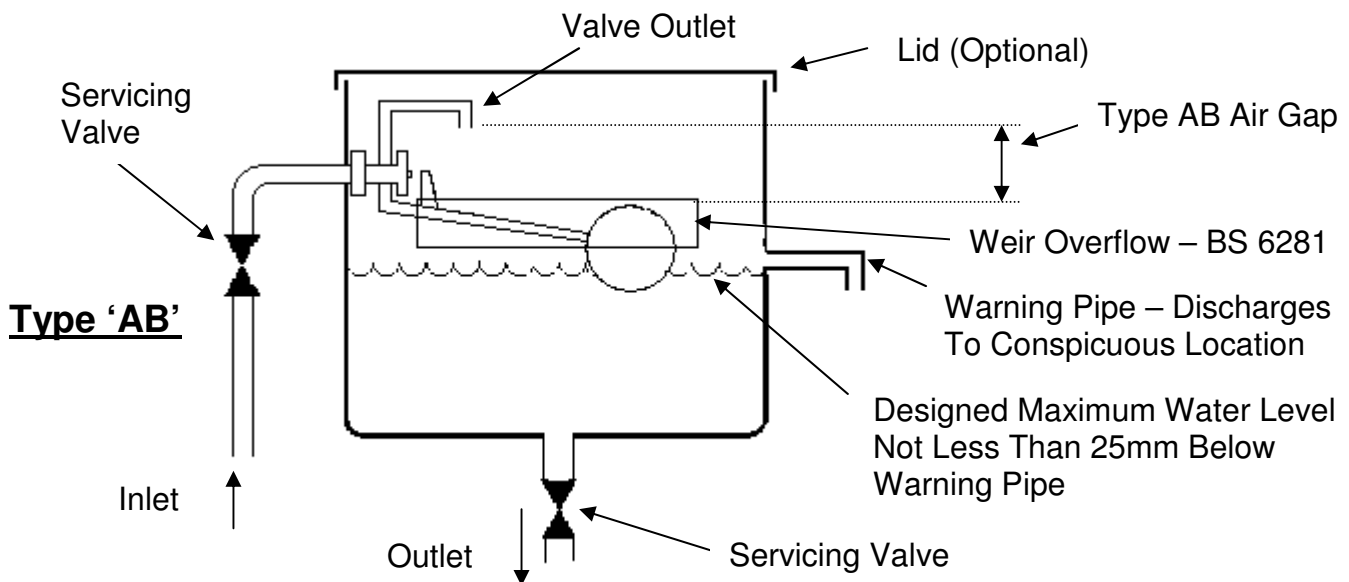
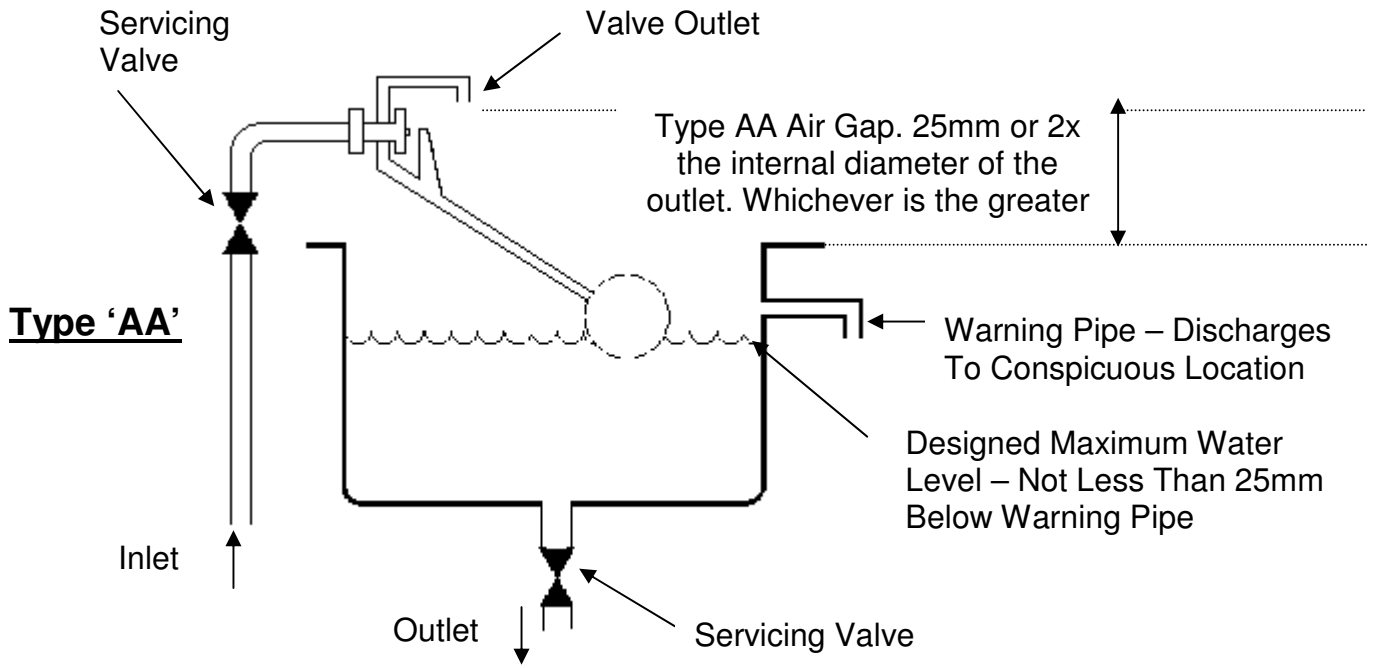


WATER REGULATIONS INFORMATION SHEET



TYPE 'AA' & TYPE 'AB' AIR GAPS



Fittings may be supplied from these systems by either gravity or a pump / booster set.

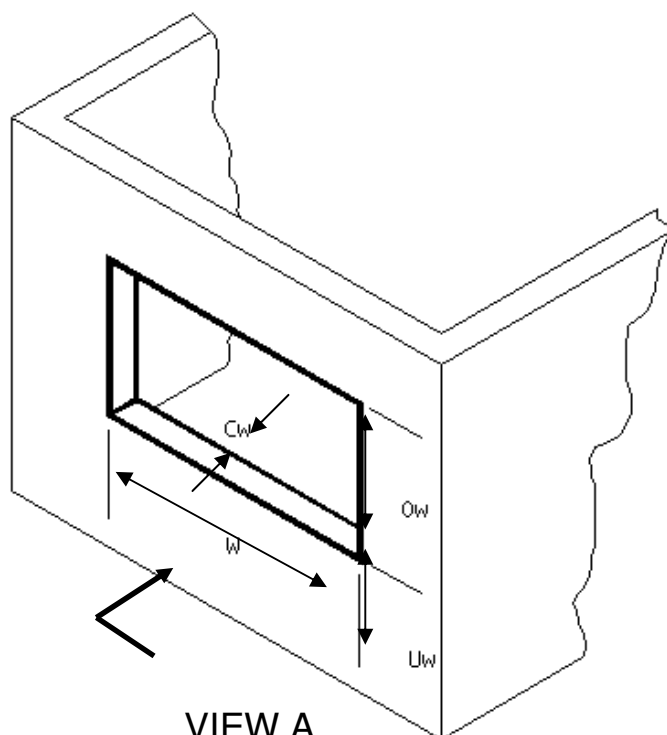
The information contained within this document is for information only and is correct at the time of issue. All installations must conform to the requirements of the Water Supply (Water Fittings) Regulations 1999. Essex & Suffolk Water can accept no liability for any loss or injury resulting from the use of this information.

WATER REGULATIONS

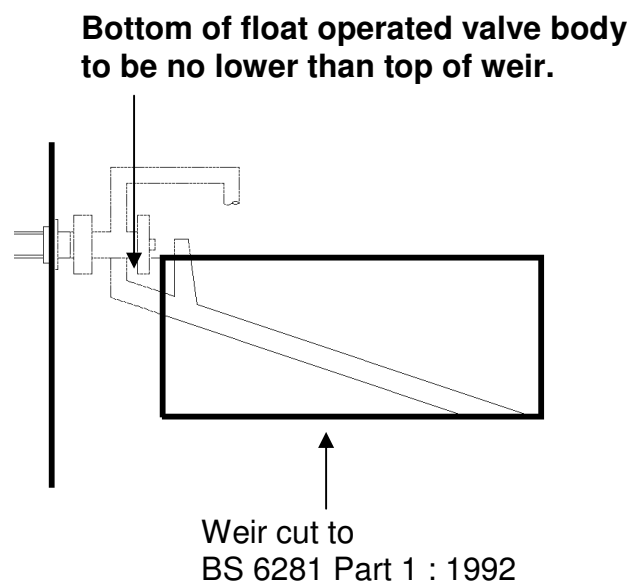
INFORMATION SHEET



TYPE 'AB' AIR GAPS – WEIRS COMPLYING TO FORMER BS6281



VIEW A



VIEW A

Examples Of Acceptable Weir Sizes At 3.6 Bar Supply Pressure :

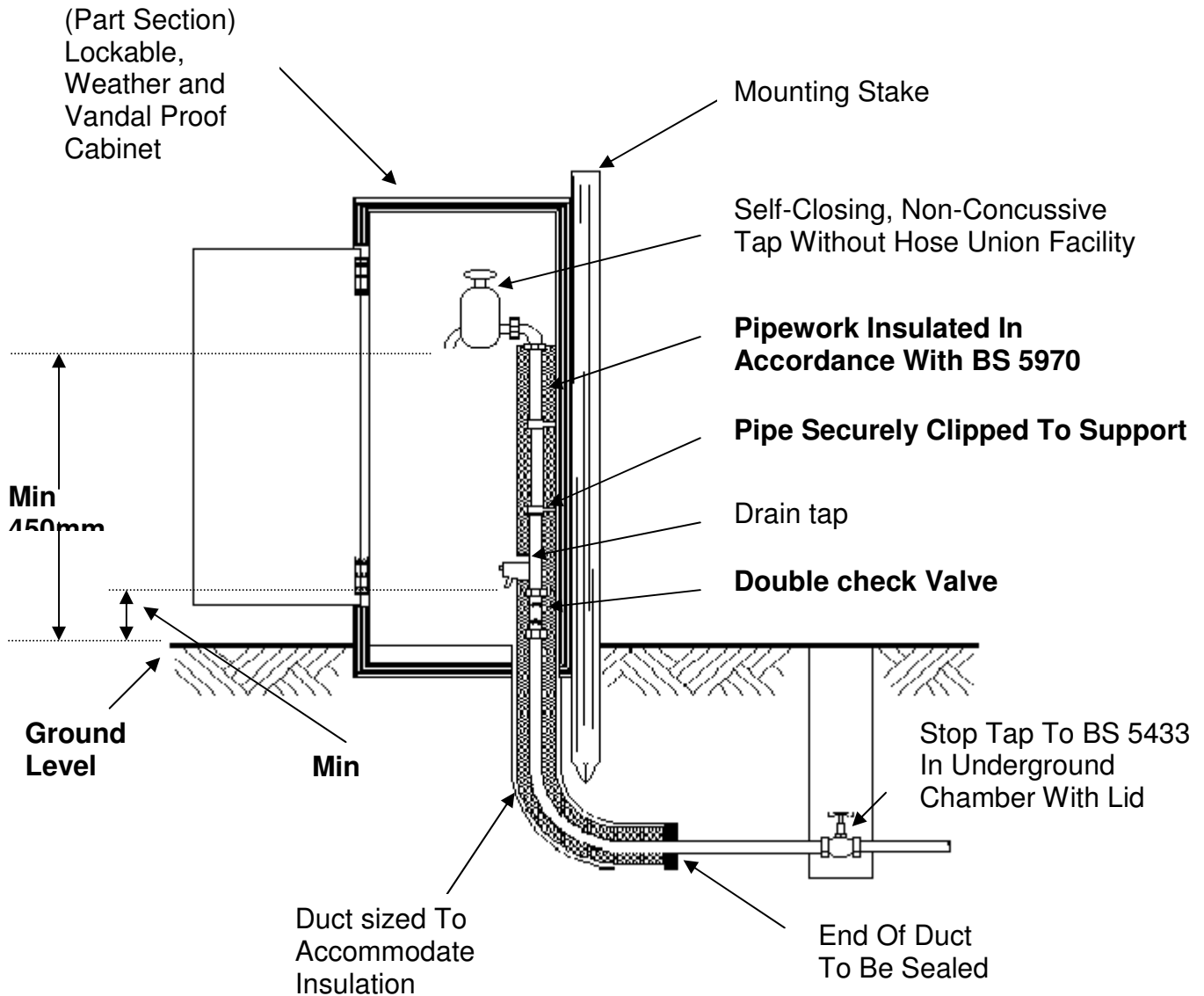
Internal Diameter Of Inlet Pipe mm (inch)	W Minimum Weir Width (mm)		OW Required Depth Of Weir Cut (mm)	CW Maximum Thickness Of Weir Crest (mm)	UW Minimum Vertical Depth Below Weir (mm)
	Unobstructed	Meshed 0.65mm Max opening			
13 (1/2")	150	360	50	110	45
20 (3/4")	210	505	75	175	70
26 (1")	260	625	104	255	105
39 (1 1/2")	350	840	140	310	125
46 (1 3/4")	400	960	165	355	145
52 (2")	500	1200	190	420	170
72 (3")	600	1440	295	750	300
102 (4")	750	1800	370	814	325

The information contained within this document is for information only and is correct at the time of issue. All installations must conform to the requirements of the Water Supply (Water Fittings) Regulations 1999. Essex & Suffolk Water can accept no liability for any loss or injury resulting from the use of this information.

WATER REGULATIONS INFORMATION SHEET



MAINS SUPPLIED COMMERCIAL STANDPIPES



Note:-

If a Hose Union tap is fitted, then the standpipe must not be installed within 20m of a bin store, or on a non-domestic premises, unless supplied via a type 'AA' or type 'AB' air gap.

The information contained within this document is for information only and is correct at the time of issue. All installations must conform to the requirements of the Water Supply (Water Fittings) Regulations 1999. Essex & Suffolk Water can accept no liability for any loss or injury resulting from the use of this information.